



Glen View, Gravesend, DA12 1LP
Asking price £375,000 Freehold

 3  1  1  D

The Homes Group are delighted to present to the market this very spacious three-bedroom end of terrace property. Set in a sought-after location, adjoining the Windmill Hill Conservation area and Echo Square, this house could make the perfect family home.

Benefits include: Three double bedrooms, 21'2 fitted open plan kitchen/diner, 18'4 lounge leading to the balcony, spacious bathroom with a bath and double shower, double glazing, central heating, rear garden with side access, integral garage (potential to convert to bedroom/study - subject to building regulations), driveway and front garden. The layout of the rooms as below:

Entrance Hall

16'2 x 7'0 at widest (4.93m x 2.13m at widest)

Bedroom One

14'2 x 9'9 (4.32m x 2.97m)

Bedroom Two

13'3 x 9'9 (4.04m x 2.97m)

Bathroom

11'0 x 8'11 (3.35m x 2.72m)

Landing

Kitchen/Dining Room

21'2 x 9'0 (6.45m x 2.74m)

Living Room

18'4 x 12'2 (5.59m x 3.71m)

Balcony

13'4 x 6'1 (4.06m x 1.85m)

Bedroom Three

11'0 x 8'10 (3.35m x 2.69m)

Integral Garage

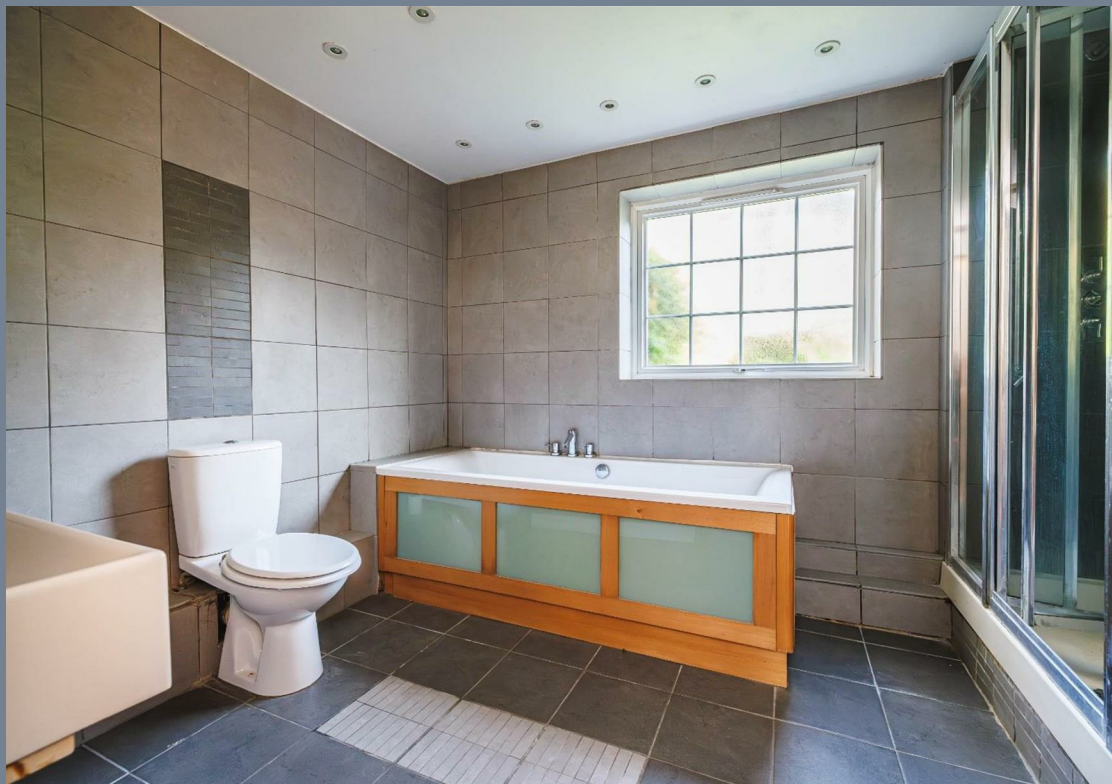
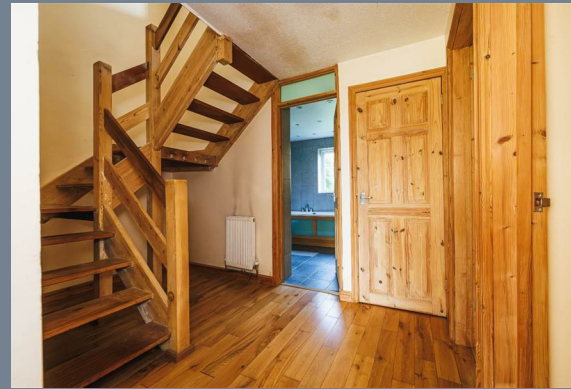
17'6 x 7'9 (5.33m x 2.36m)

Front Garden and Driveway

Rear Garden

Tenure: Freehold

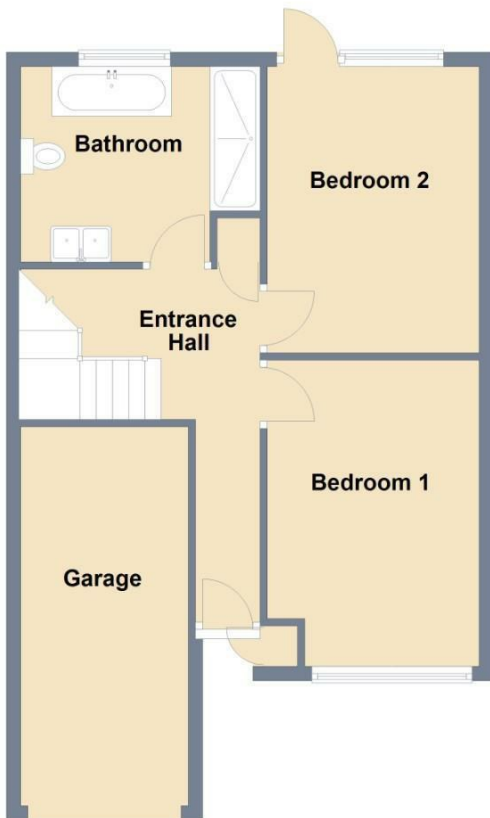
Council Tax: Band D





Ground Floor

Approx. 58.2 sq. metres (626.8 sq. feet)

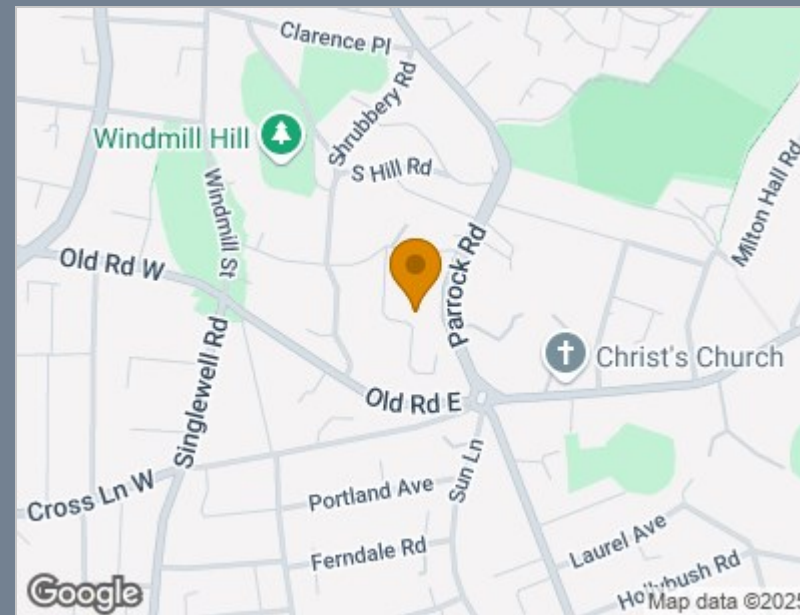


First Floor

Approx. 54.4 sq. metres (585.1 sq. feet)



Total area: approx. 112.6 sq. metres (1212.0 sq. feet)



Energy Efficiency Rating		
	Current	Potential
Very energy efficient - lower running costs		
(92 plus) A		
(81-91) B		83
(69-80) C	68	
(55-68) D		
(39-54) E		
(21-38) F		
(1-20) G		
Not energy efficient - higher running costs		
England & Wales	EU Directive 2002/91/EC	

Viewing

Please contact The Homes Group Office on 01634 558855 if you wish to arrange a viewing appointment for this property or require further information.

These particulars, whilst believed to be accurate are set out as a general outline only for guidance and do not constitute any part of an offer or contract. Intending purchasers should not rely on them as statements of representation of fact, but must satisfy themselves by inspection or otherwise as to their accuracy. No person in this firm's employment has the authority to make or give any representation or warranty in respect of the property.